



Would you like to remove at least 10% of the cars from your rail fleet?

Track EVERY Rail Shipment Anywhere, Anytime

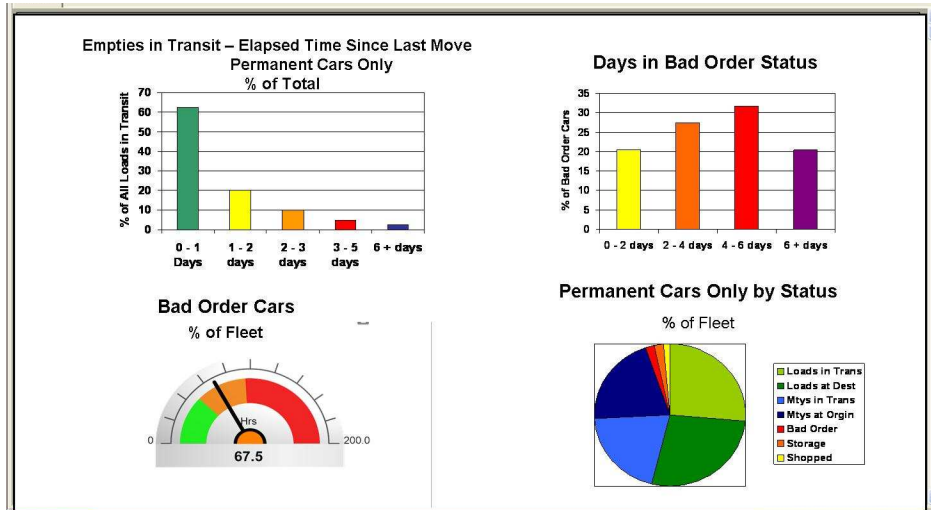
With today's complex supply chains, overworked transportation managers need an automated solution for monitoring rail shipments. But the spotty coverage provided by most rail tracking systems is frustrating.

Shippers in the know use RMI's Freight Management System (FMS) because it's the *only* solution that can track every rail shipment, anywhere, anytime. RMI's rail solutions encompass over 8 million carloads per year across hundreds of short line and regional railroads, so you never have to worry about cars getting lost in the system. FMS provides:

- The most comprehensive coverage available with no "black holes"
- Unsurpassed levels of data accuracy
- Immediate visibility of shipment status
- The knowledge to quickly identify exceptions before they become critical issues

FMS helps reduce transportation costs by:

- **Shrinking car cycle times**
- **Providing continuous inventory visibility**
- **Lowering demurrage charges**



Make Rail More Economical Than Ever

FMS provides a graphical dashboard that helps you track rail transit times and reliability, reduce demurrage expenses, and get better inventory visibility. With FMS, you can:

- Analyze transit performance by railroad, lane, route, customer, fleet and car
- Originate electronic bills of lading
- Forecast inbound loaded and empty railcars
- Spot exceptions: bad orders; cars out of route; delayed cars
- Analyze equipment utilization
- Customize your own reports

FMS is a software as a service (SaaS) offering so it's easy to implement and there are no up front license fees. And it's a simple add-on for transportation professionals who already use RMI's ShipperConnect®.

RMI also offers logistics advisory services from our staff of rail experts. Shippers leverage our insight to help with rail rate negotiations, fleet maintenance management and private car accounting and lease management.